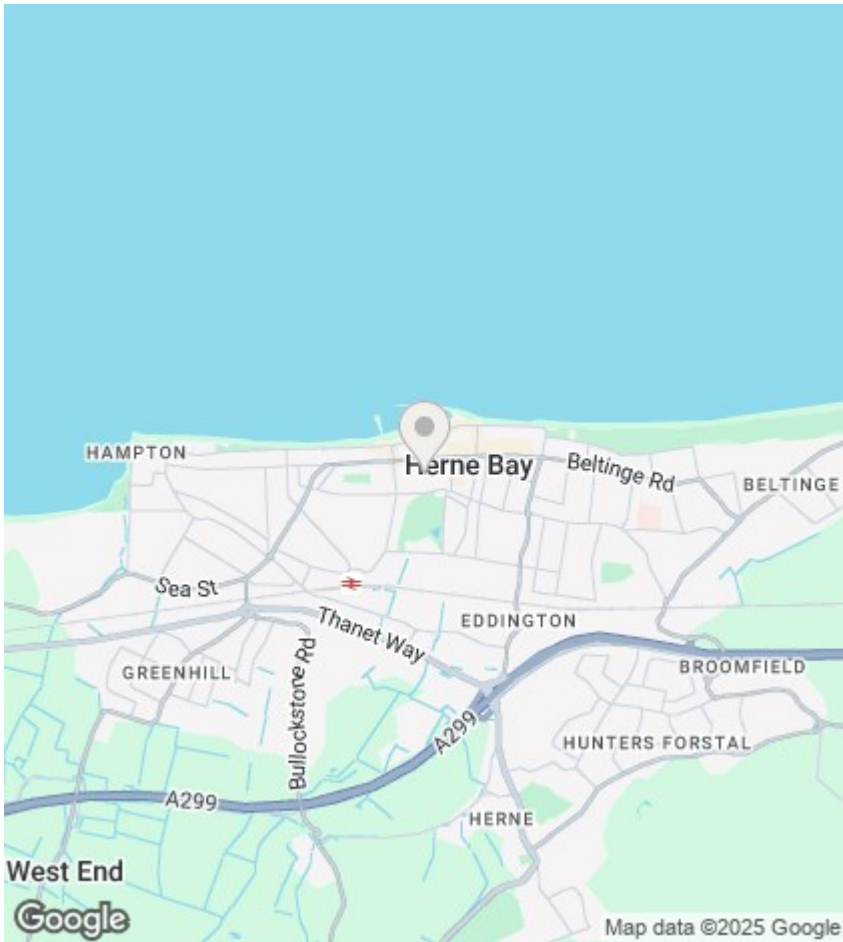


KE



Flat 35 Richmond Court Richmond Street, Herne Bay, Kent, CT6 5LE £215,000

- Vacant Possession/No Onward Chain
- Two Bedroom Managed Retirement Flat
- Over Looking Herne Bay Memorial Park
- Close To All Amenities and Public Transport



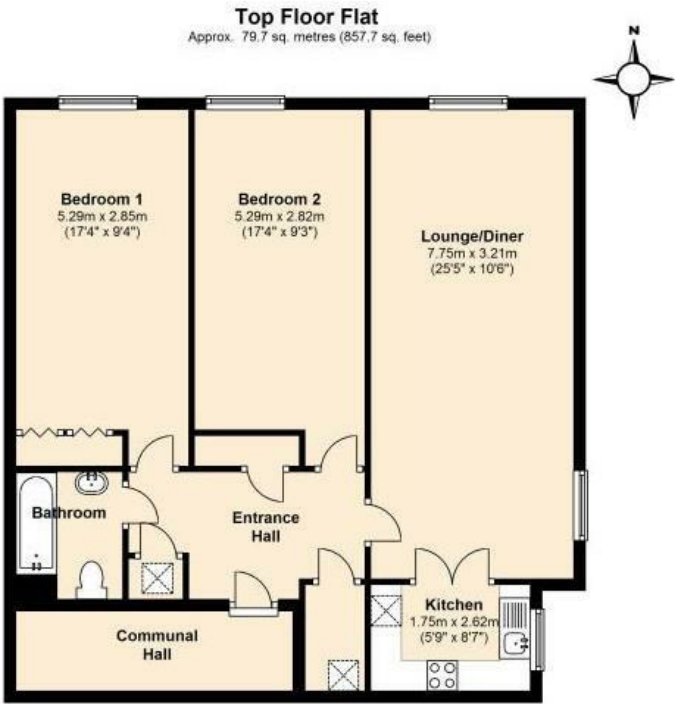
Viewings

Viewings by arrangement only. Call 01227 389 998 to make an appointment.

Council Tax Band:

EPC Rating:

Energy Efficiency Rating		
	Current	Potential
Very energy efficient - lower running costs		
(92 plus) A		
(81-91) B		
(69-80) C		
(55-68) D		
(39-54) E		
(21-38) F		
(1-20) G		
Not energy efficient - higher running costs		
England & Wales		
EU Directive 2002/91/EC		



Total area: approx. 79.7 sq. metres (857.7 sq. feet)

Whilst every attempt has been made to ensure the accuracy of the floor plan contained here; measurements of doors, windows, rooms and any other items are approximate and no responsibility is taken for any error, omission, or mis-statement. This plan is for illustrative purposes only and should be used as such by any prospective purchaser.
Plan produced using The Mobile Agent.